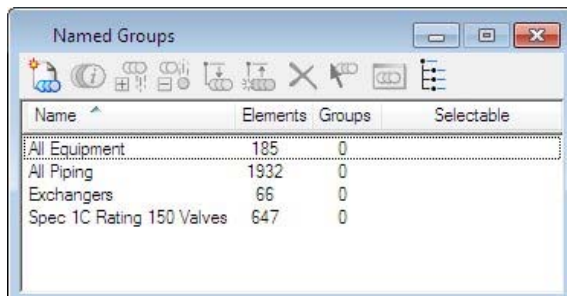


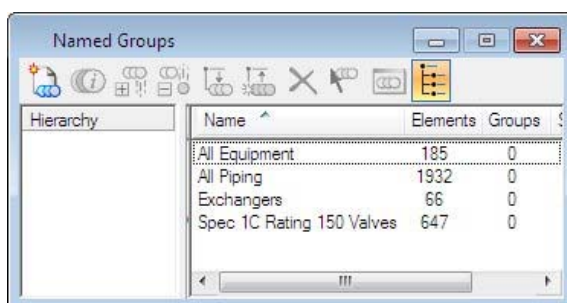
Menus

Named Groups dialog

Used to create and modify Used to view **named groups** and hierarchies of named groups. A named group is a group of selected elements that is given a name, and can be manipulated as a single element. A hierarchy is a selection of named groups that can be manipulated as one. This dialog opens when you select Named Groups from the Utilities menu.







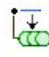
Named Groups dialog

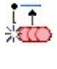






Named Groups dialog with Hierarchy enabled

Named Groups icon bar

Let you access tools for creating and managing Named Groups.

 <i>New Named Group</i>	Inserts a new entry for a named group in the list box. The default name (Group <n>) is highlighted to let you key in the name of your choice.
 <i>Show Named Group</i>	(Named group selected only) Opens the Members of Named Group dialog, which is similar to the Element Information dialog.
 <i>Add Elements</i>	(Named group selected only) Initiates the Add to Graphic Group tool to let you add elements to the Named Group.
 <i>Remove Elements</i>	(Named group(s) selected only) Initiates the Drop from Graphic Group tool, which lets you remove elements from the Named Group(s).
 <i>Add Named Group to</i>	(Show Hierarchy on only - with a hierarchy and a named group selected) Lets you add a Named Group to another to form a hierarchy.

<i>Parent</i>	
 <i>Remove Group from Parent</i>	(Show Hierarchy on only - with a "child" hierarchy selected) Lets you remove a named group from a hierarchy.
 <i>Delete Named Group</i>	(Named group selected only) Lets you delete a Named Group.
 <i>Select Elements in Named Group</i>	(Named group selected only) When a named group is selected in the groups list (and it has focus), elements of the named group are selected. Alternatively, you can double-click the named group in the groups list. When a named group is selected in the hierarchy list (and it has focus), elements of the named group and any members of contained groups of the hierarchy are selected.
 <i>Put Elements into the Displayset</i>	(Named group selected only) Puts the elements from the selected named group(s) into the displayset.
 <i>Show Hierarchy</i>	Redisplays the Named Groups dialog to display Hierarchies.

Named Groups list box

Displays information relating to named groups present in the active model. Columns may be displayed/hidden by right-clicking on the heading row and toggling the entry on/off.

Right-clicking on an entry in the list box displays a pop-up menu with the following options:

Menu Item	Usage
New	Create a new named group.
Rename	Rename the highlighted named group.
Show Members	Open the Members of Named Group dialog, which is similar to the Element Information dialog.
Delete	Deletes the highlighted named group(s).
Add to Selection	Selects the elements in the highlighted named groups.
Remove From Selection	Removes from selection set, the elements in the highlighted named group(s).
Add To Displayset	Adds to the displayset, elements in the highlighted named group(s).
Remove From Displayset	Removes from the displayset, elements in the highlighted named group(s).
Clear Displayset	Removes all elements from the displayset.

Dragging an element into the list box with the *Element Selection* pointer and dropping it on the list box entry for a named group adds the element to that named group.

- Hierarchy — (Show Hierarchy turned on only) Displays names of all named groups and their attached hierarchical "child" named groups.
- Type — (hidden by default) For use with other applications.
- Name — Displays names of all named groups present in the model.
- Description — (hidden by default) Displays the descriptions, if any, for the named groups in the model.
- Elements — Displays the number of elements contained in the named groups.
- Groups — Displays the number (other) groups contained in the named groups.

- **Selectable** — If on, all elements in a named group will be selected when Graphic Group Lock is on and the *Element Selection* tool is used, regardless of the change propagation settings for the members. If off, then change propagation settings determine the elements of the named group that are selected. Can be toggled on/off by clicking on the entry in the Selectable column of the dialog.
- **Locked** — (hidden by default) Can be used by other applications to prevent manipulation of a named group.