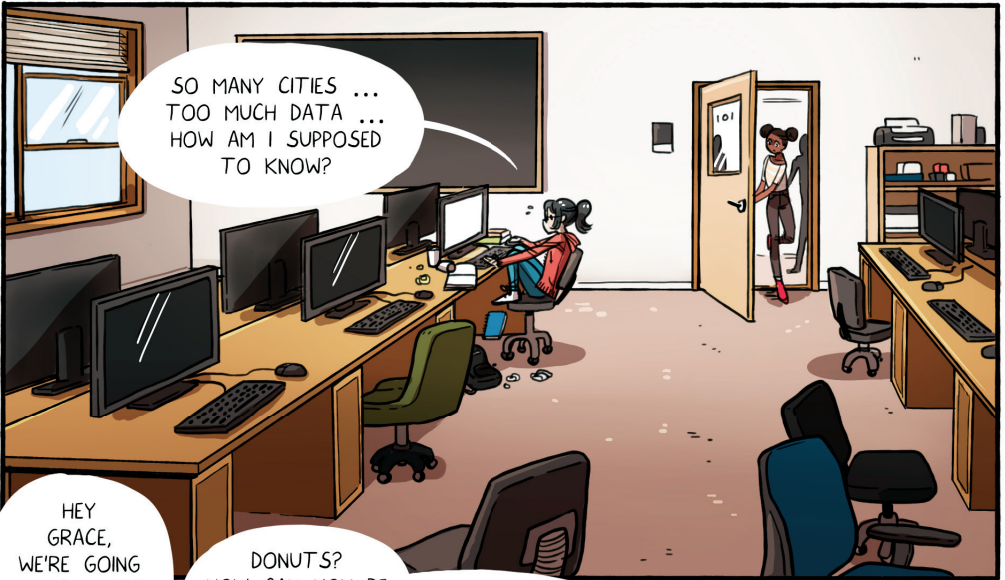


# FME LIZARD

& the Data Explorers



A SAFE SOFTWARE STORY



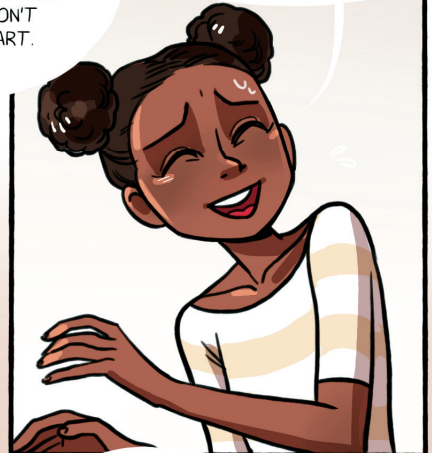
SO MANY CITIES ...  
TOO MUCH DATA ...  
HOW AM I SUPPOSED  
TO KNOW?

HEY  
GRACE,  
WE'RE GOING  
FOR DONUTS.  
WANT TO  
COME?

DONUTS?  
HOW CAN YOU BE  
THINKING ABOUT  
DONUTS?

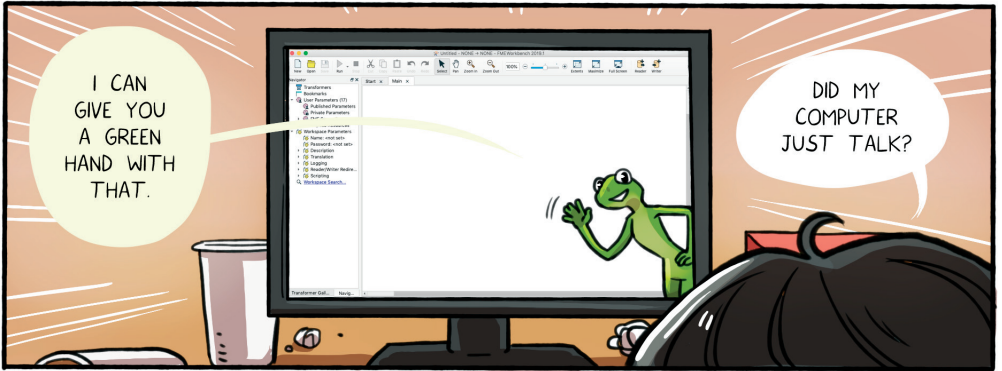
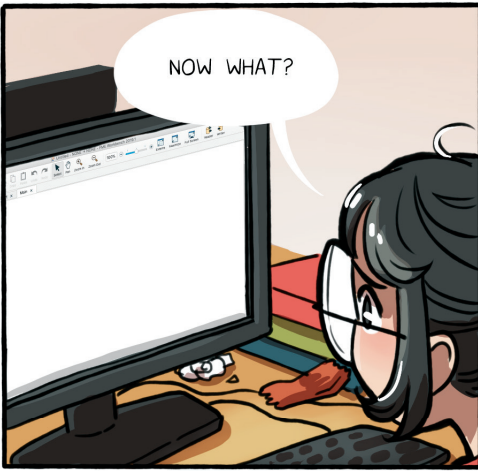
THE SCHOLARSHIP  
APPLICATION CLOSSES IN  
EIGHT HOURS. MAKING SOMETHING  
WITH OPEN DATA ... SOUNDS EASY  
ENOUGH, BUT IT'S BEEN THREE  
WEEKS AND I STILL DON'T  
KNOW WHERE TO START.  
I'M DOOMED!

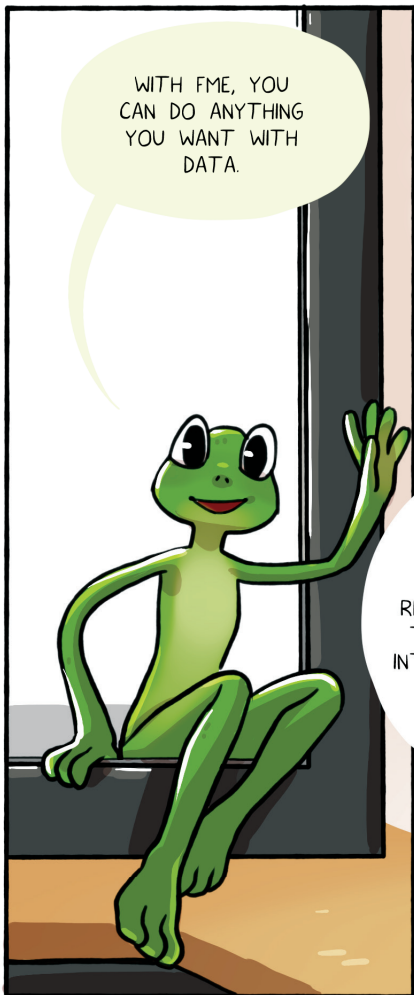
WELL, GOOD LUCK  
WITH THAT. I'LL BRING  
YOU BACK A DONUT.



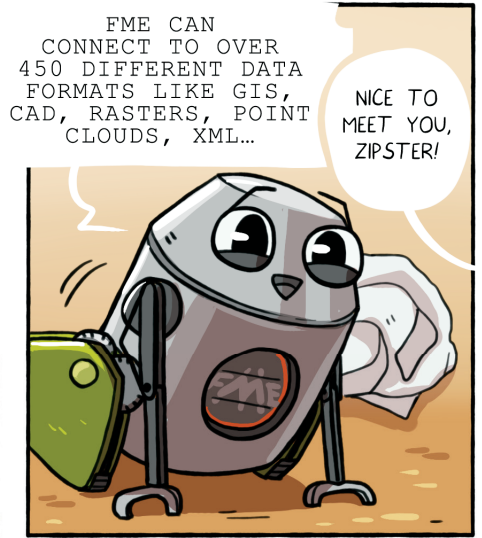
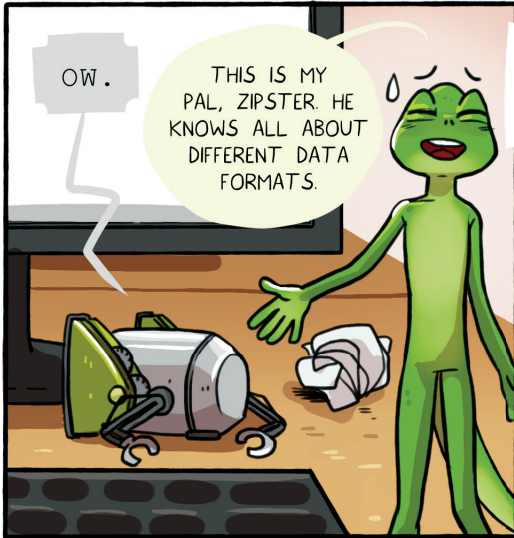
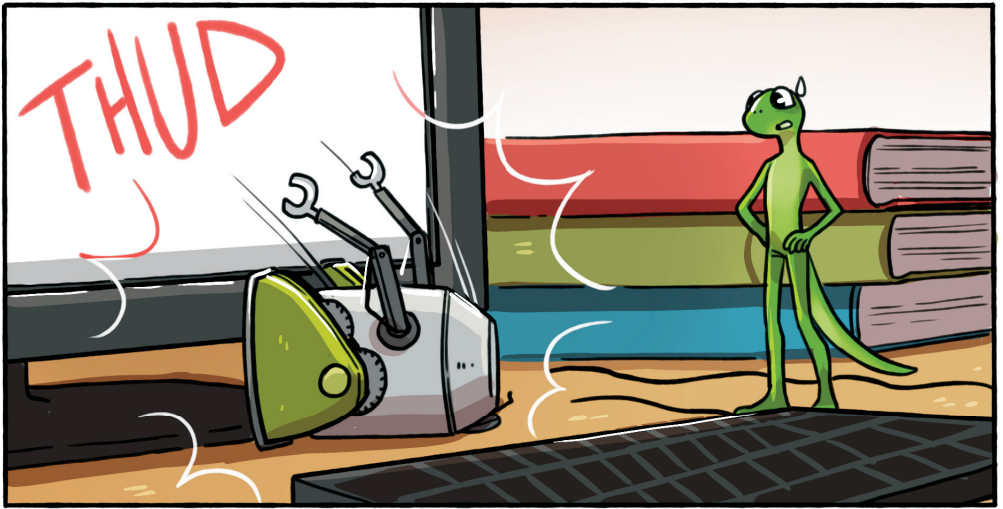
DATA  
INTEGRATION.  
LET'S TRY THIS.  
MY LAST HOPE.













I THINK OUR FRIEND GRACE NEEDS SOME INSPIRATION.

I WILL GET MY PLANE.



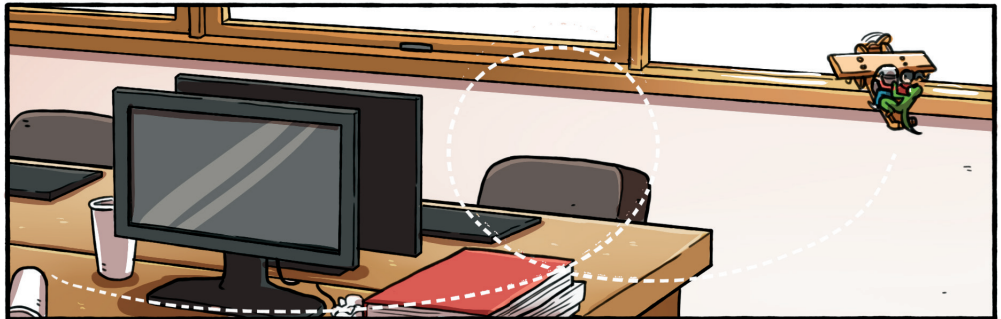
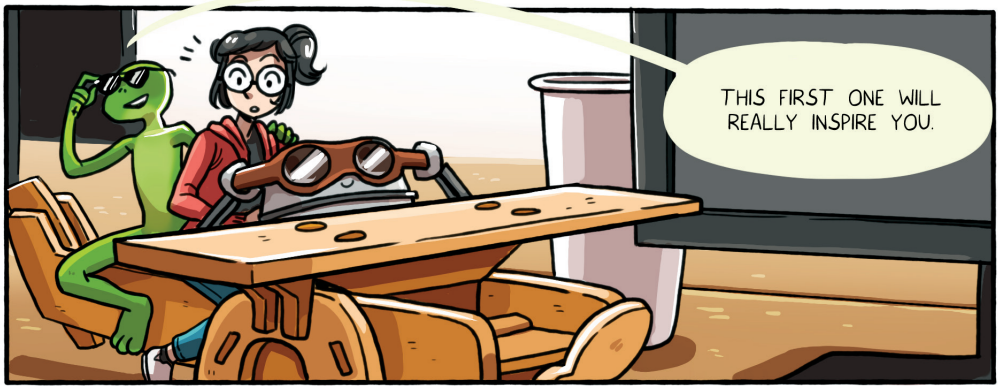
ZIPPY AND I WILL GO GET SOME STORIES FOR YOU ABOUT HOW OTHER PEOPLE ARE USING FME. MAYBE THAT'LL SPARK SOME IDEAS FOR YOU.

THAT SOUNDS FUN! CAN I COME?



IT'LL BE A TIGHT SQUEEZE, BUT I THINK IF WE JUST...





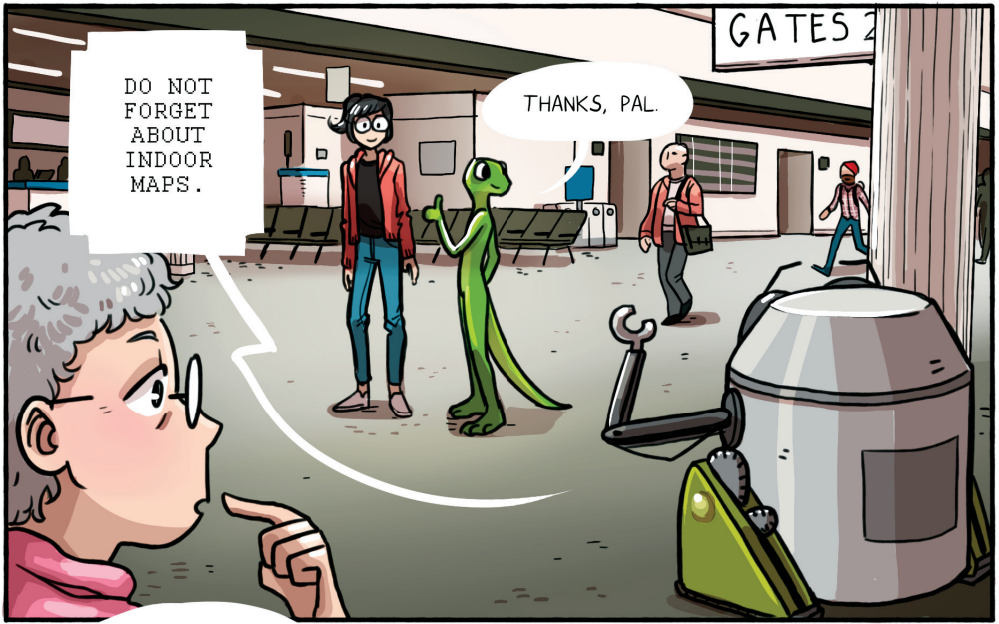
A BUSY AIRPORT  
MEANS A LOT OF DATA  
TO MANAGE - SECURITY,  
AIRPLANE LOCATIONS,  
DATABASES, EVEN  
BLUEPRINTS.

SOUNDS LIKE  
A MESS!

IT COULD  
BE, BUT IT ISN'T.  
THIS AIRPORT USES FME  
TO MAKE SURE ALL OF  
THAT DATA STAYS  
SYNCHRONIZED.

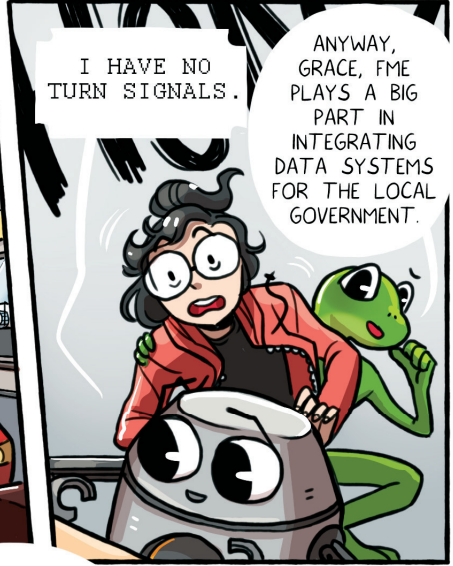








THIS ISN'T WHAT I HAD IN MIND!



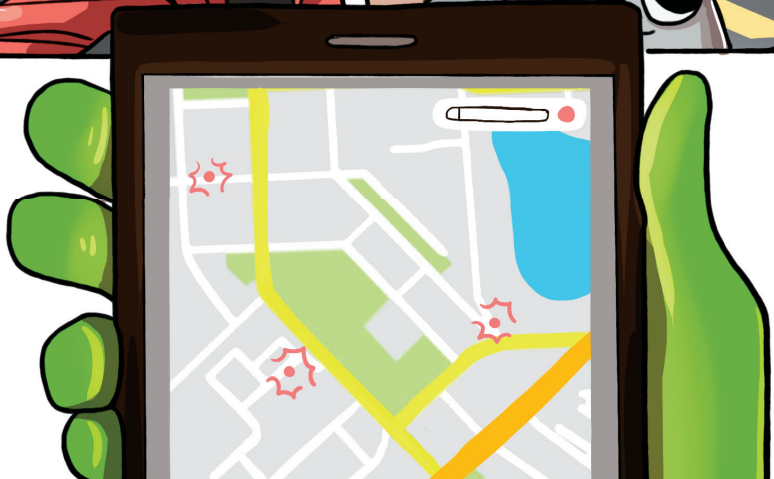
I HAVE NO TURN SIGNALS.

ANYWAY, GRACE, FME PLAYS A BIG PART IN INTEGRATING DATA SYSTEMS FOR THE LOCAL GOVERNMENT.



ARE THOSE SIRENS?!

WHEN SOMEONE HAS AN EMERGENCY, AMBULANCES NEED TO KNOW WHAT ADDRESS TO GO TO. THE CITY USES FME TO BUILD A MAP OF ALL ADDRESSES AND KEEP IT UP TO DATE.



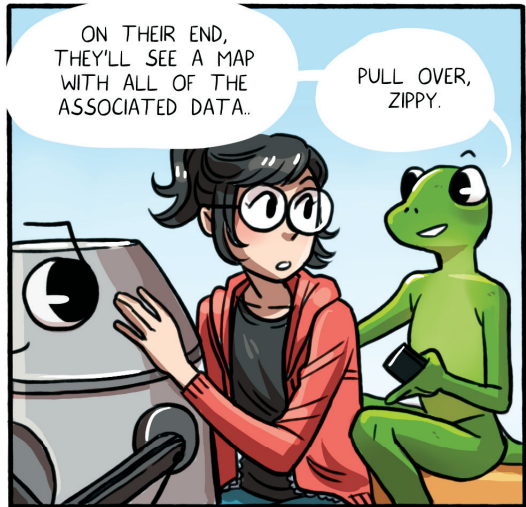




POTHOLE.

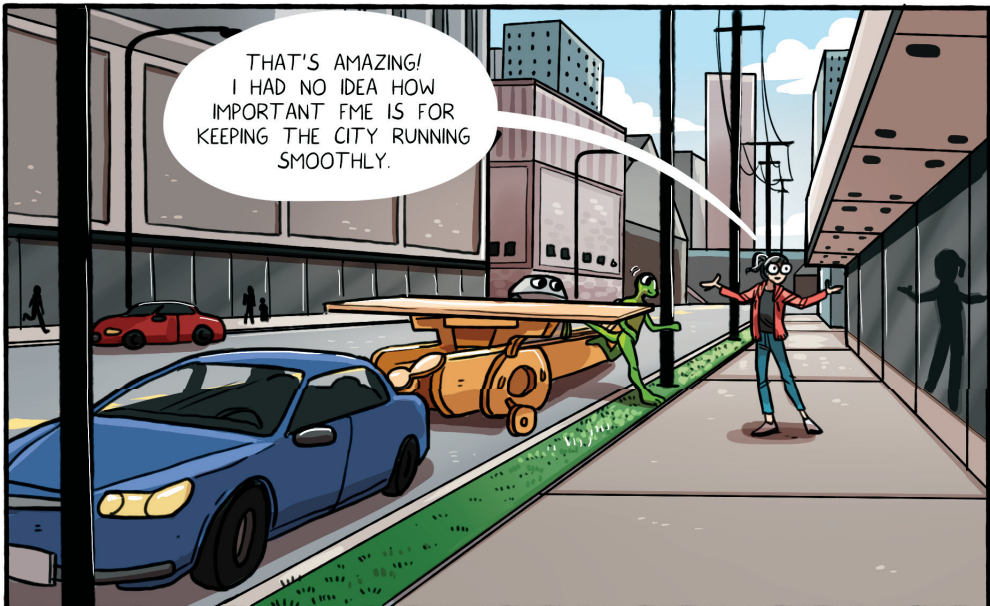


THEY ALSO HAVE AN APP WHERE ANYONE CAN REPORT A POTHOLE. IF I SEND THEM THE LOCATION OF THAT BUMP, THEY'LL BE ABLE TO COME FIX IT RIGHT AWAY.



ON THEIR END, THEY'LL SEE A MAP WITH ALL OF THE ASSOCIATED DATA.

PULL OVER, ZIPPY.



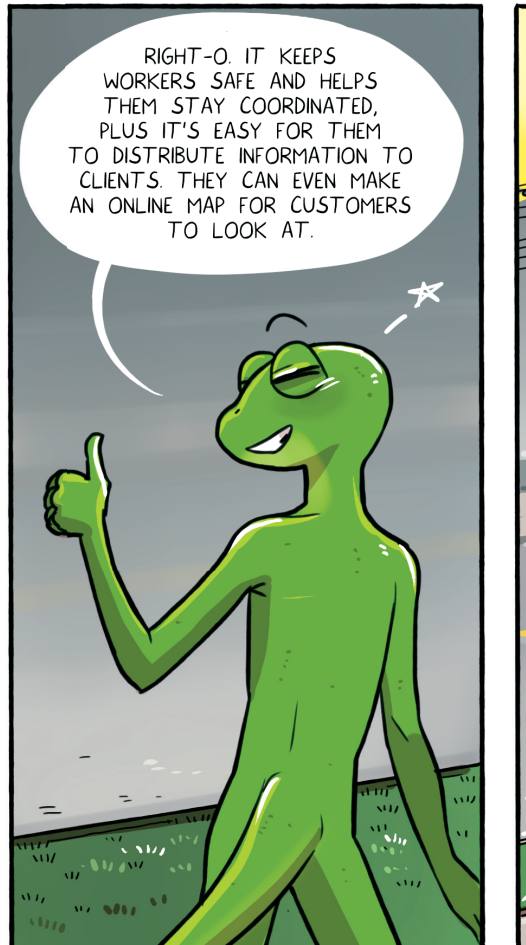
THAT'S AMAZING! I HAD NO IDEA HOW IMPORTANT FME IS FOR KEEPING THE CITY RUNNING SMOOTHLY.



THAT'S JUST THE BEGINNING.

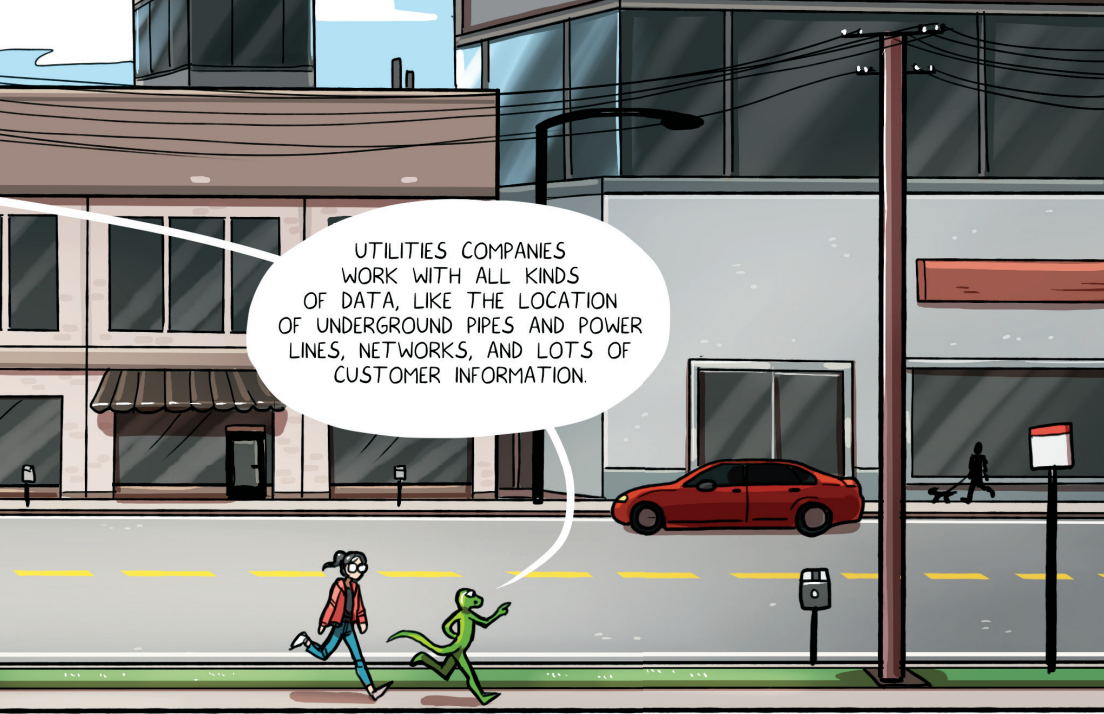


LET ME GUESS. THEY USE FME TO INTEGRATE ALL OF THIS DATA.

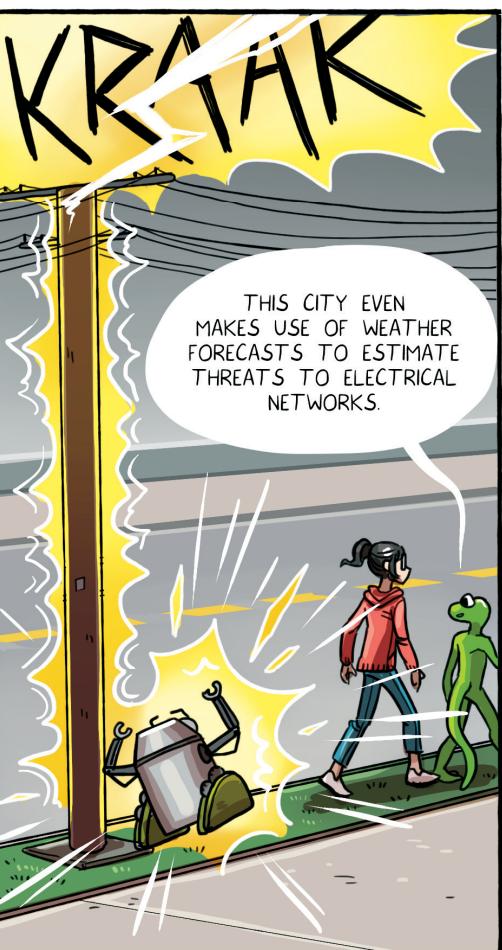


RIGHT-O. IT KEEPS WORKERS SAFE AND HELPS THEM STAY COORDINATED, PLUS IT'S EASY FOR THEM TO DISTRIBUTE INFORMATION TO CLIENTS. THEY CAN EVEN MAKE AN ONLINE MAP FOR CUSTOMERS TO LOOK AT.





UTILITIES COMPANIES WORK WITH ALL KINDS OF DATA, LIKE THE LOCATION OF UNDERGROUND PIPES AND POWER LINES, NETWORKS, AND LOTS OF CUSTOMER INFORMATION.



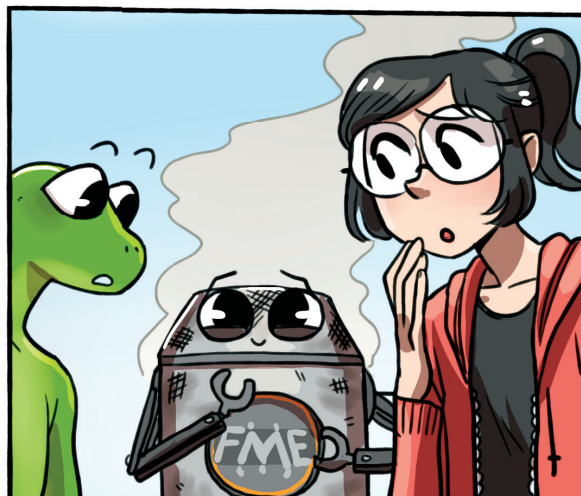
KRAAK

THIS CITY EVEN MAKES USE OF WEATHER FORECASTS TO ESTIMATE THREATS TO ELECTRICAL NETWORKS.



WOW! YOU COULD SAY FME REALLY IS A POWERFUL TOOL.

HA. HA. HA.



FME





I THINK I UNDERSTAND NOW!

JUST LIKE THE AIRPORT USES FME TO INTEGRATE AIRPLANES, DATABASES, AND BLUEPRINTS, I CAN USE FME TO INTEGRATE OPEN DATA FROM ALL OVER THE WORLD.

AND JUST LIKE THE CITY USES FME TO BUILD MAPS FOR ADDRESSES AND POTHOLES, I CAN USE FME TO MAKE A MAP.

AND JUST LIKE UTILITIES COMPANIES DISTRIBUTE DATA TO CUSTOMERS, I CAN USE FME TO DISTRIBUTE THE MAP I CREATE!



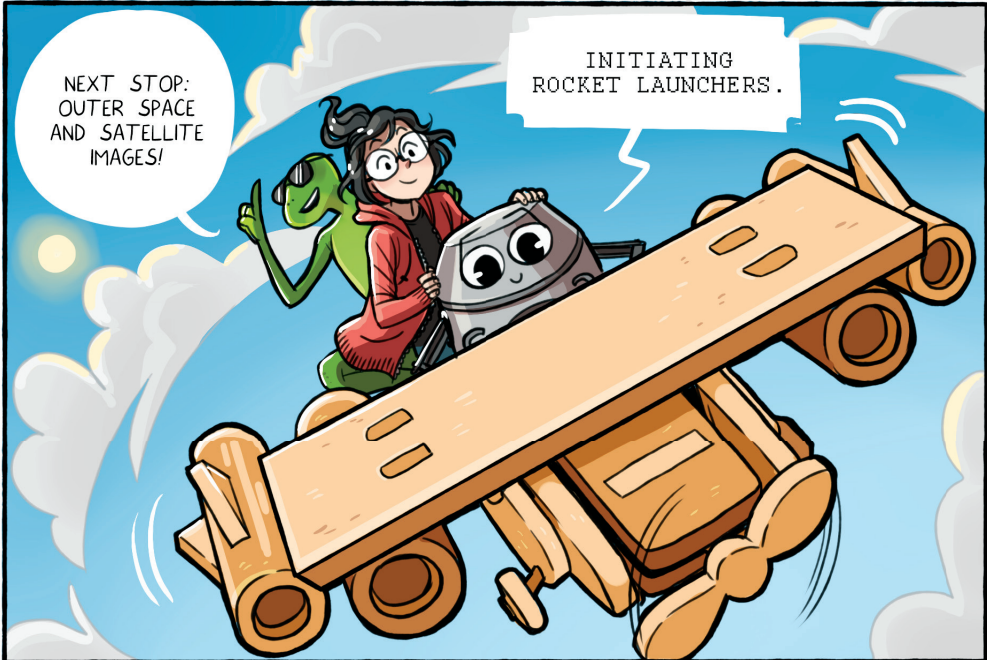
YOU GOT IT, KID.



YOU ARE SMART, GRACE.



PLEASE SIT DOWN.

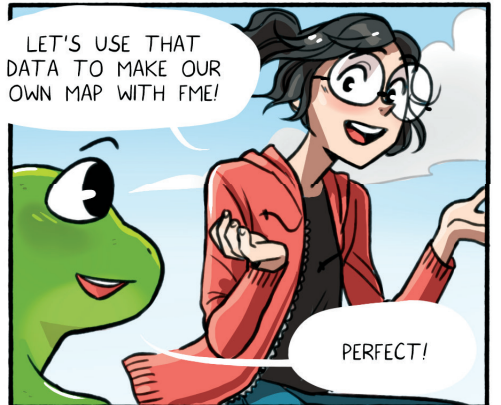
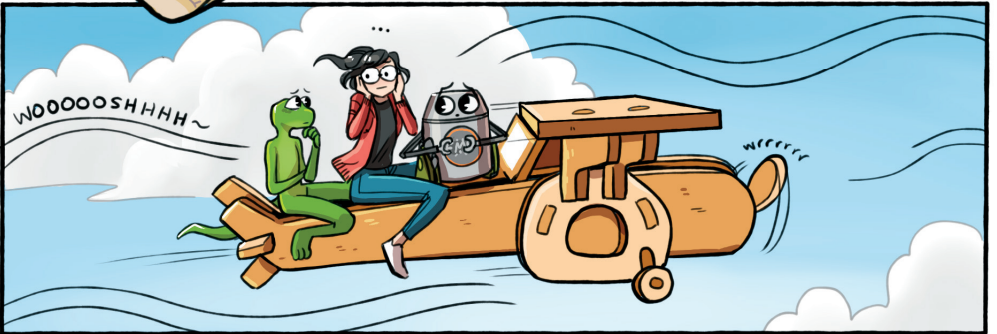
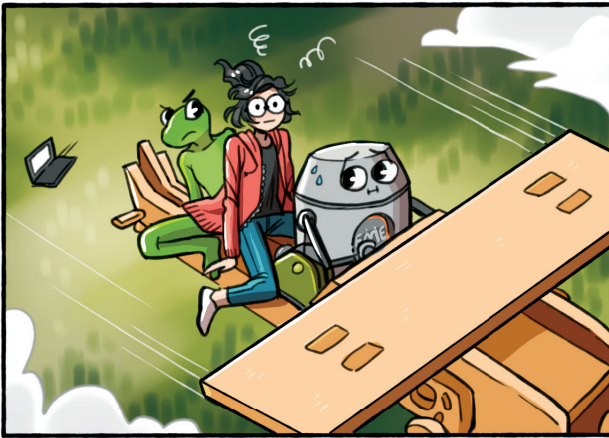


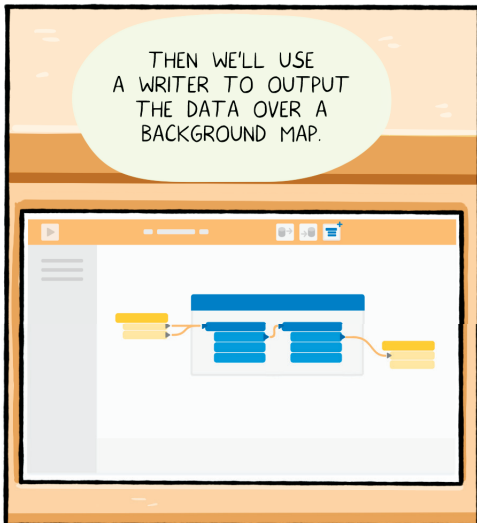
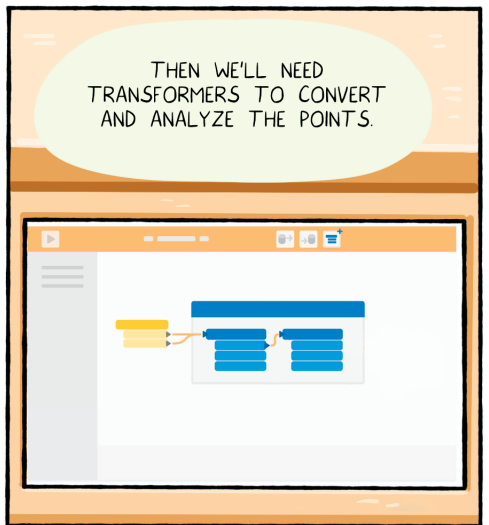
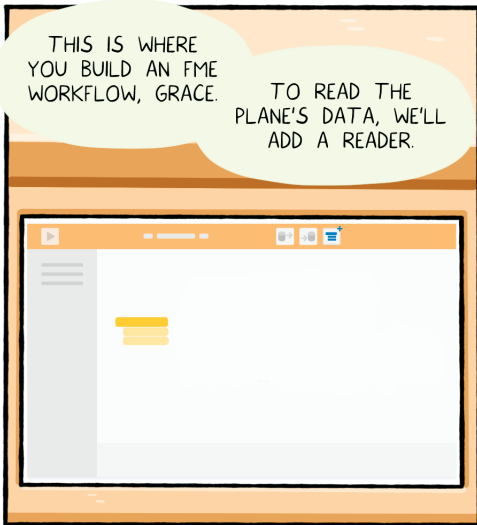
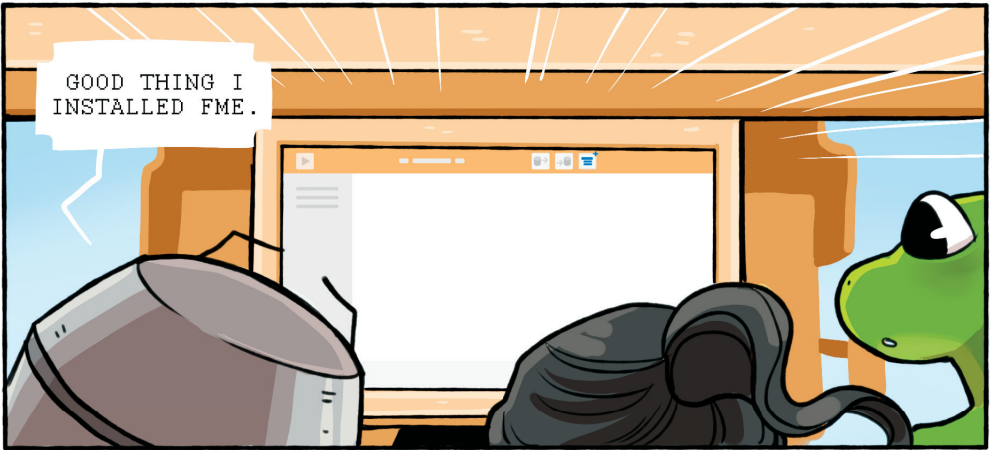
NEXT STOP: OUTER SPACE AND SATELLITE IMAGES!

INITIATING ROCKET LAUNCHERS.













I HAVE TO  
FINISH MY PROJECT.  
THANKS FOR THE  
TOUR!



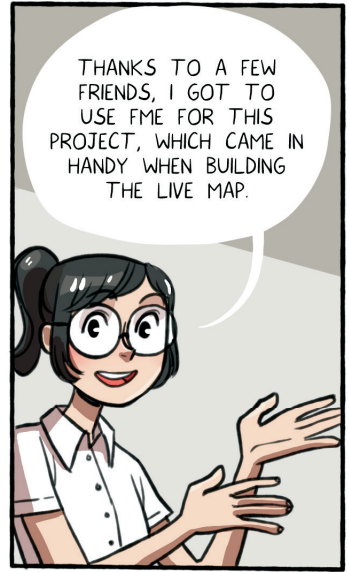
IF YOU THOUGHT  
THAT WAS FUN, YOU  
SHOULD REALLY COME  
ALONG FOR THE FME  
WORLD TOUR!

WE VISIT STOCKHOLM,  
LONDON, TORONTO, SAN  
FRANCISCO, HOUSTON,  
CALGARY...

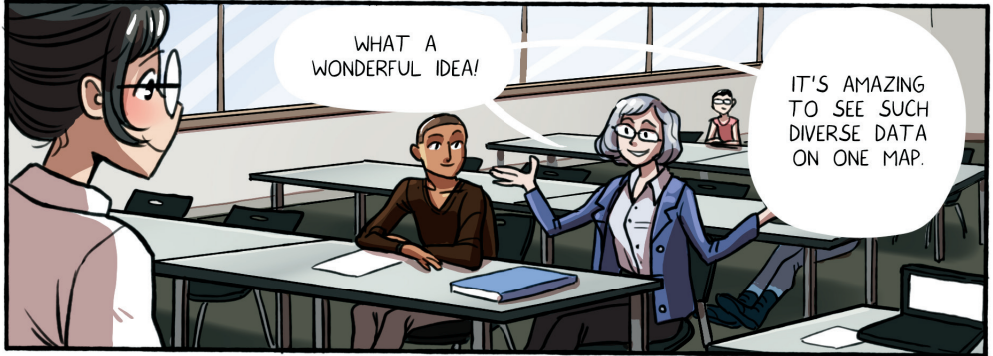
THIS WILL  
GO ON FOR A  
WHILE. YOU'D  
BETTER GO!



FOR MY PROJECT, I COLLECTED DATA FROM AROUND THE WORLD AND DISPLAYED THEM ON AN INTERACTIVE MAP.



THANKS TO A FEW FRIENDS, I GOT TO USE FME FOR THIS PROJECT, WHICH CAME IN HANDY WHEN BUILDING THE LIVE MAP.



WHAT A WONDERFUL IDEA!

IT'S AMAZING TO SEE SUCH DIVERSE DATA ON ONE MAP.



NICE WORK, ZIPPY! LOOKS LIKE THIS WAS ANOTHER JOB WELL DONE.

HIGH FIVE.



THAT HAPPENS SOMETIMES.

\*SIGH\* LET'S GET YOU FIXED UP, PAL.

KLANG





LOOKS LIKE WE  
NEED TO GO, ZIPPY.

THANKS FOR THE  
ADVENTURES, GRACE.



WAIT, DON'T  
GO! I DIDN'T EVEN  
GET YOUR NAME.

MY NAME?  
IT'S—



END.

HEY DATA ADVENTURER!  
YOU CAN SHARE YOUR OWN FME STORY  
BY VISITING [SAFE.COM/COMMUNITY](https://www.safe.com/community).

LEARN HOW STUDENTS,  
NON-PROFIT ORGANIZATIONS  
AND ANYONE LOOKING TO EVALUATE  
FME CAN GET A FREE LICENSE AT  
[SAFE.COM/GRANT](https://www.safe.com/grant).







@SafeSoftware



@SafeSoftware



@SafeSoftware



@FMEChannel



safe.com



Copyright © 2020 Safe Software Inc.  
Written by Tiana Warner, Stephanie Warner, and Sandy Chan  
Illustrated by Rachel "Tuna" Petrovicz  
Published in Canada by Safe Software Inc. [www.safe.com](http://www.safe.com)  
"FME" is a registered trademark of Safe Software Inc.





**Join the FME Lizard, Zipster,  
and Grace on their adventure into  
a world powered by FME!**

*Grace has just eight hours left to finish her open data project. She thinks FME can help her – but how does it work?*

*Luckily, the FME Lizard and pal Zipster are here to help. Together, they hop into Zipster's plane and fly around the world to learn how FME helps people integrate their data. Can FME help Grace finish her project in time to win the scholarship?*